



**CZECH
AVIATION
TRAINING
CENTRE**



WELCOME to
the **Czech Aviation
Training Centre**

Czech Aviation Training Centre (CATC)

K Letišti 934/2, 161 00 Prague 6

Tel: +420 222 101 222

info@catc.cz | www.catc.cz



CZECH
AVIATION
TRAINING
CENTRE

Welcome to the Czech Aviation Training Centre

This information brochure is provided to help you get answers to your questions about our training centre. It also provides useful information about hotels in the vicinity of the Czech Aviation Training Centre, local area transportation, entertainment, training centre access and other services.

We hope you will find the information in this brochure helpful. In need of assistance, please contact us at the phone number +420 222 101 222 or by e-mail at info@catc.cz.

Our business hours are:

6:30 to 18:30 Monday - Friday

8:30 to 16:30 Sat/Sun + public holidays (Easter, May 1st, 8th, July 5th, 6th, September 28th, October 28th, November 17th, December 25th, 26th). **CATC is closed on January 1st and December 24th.**





Table of Contents

INTRODUCTION	3
LOCATION OF SERVICES	4
Ground Floor	4
Second Floor	4
Third Floor	4
CLIENT SERVICES	7
ID Badges	7
Reception	7
Assistance	7
Training Schedule	7
Information	7
Photocopies/Faxes	8
Internet	8
Smoking	8
Coffee Break Area	8
Restaurant	8
Parking	8
Field Trip	8
HOW TO REACH US	9
Public Transport from Václav Havel Airport Prague	9
Map of an Access to CATC	9
HOTELS	10
Map of Accommodation Arrangements by CATC	10
TOURIST INFORMATION	11
Prague Tourism	11
Local Restaurants	11
Local Shop	11
Local Sports Facilities	11
Public Transport	11

Introduction

The Czech Aviation Training Centre (CATC) has had more than 80 years of experience in providing training services. It is situated at Václav Havel Airport Prague and it offers a variety of wet and dry lease training services for A320, A330, B737 CL/NG, L 410, ATR 42/72, cabin crew training, maintenance training, IATA courses, dangerous goods training and aviation English courses.

The CATC is recognized by the key national and international authorities including the International Civil Aviation Organisation (ICAO) and the International Air Transport Association (IATA), holding a variety of certificates, renewed and updated in accordance with the current aviation industry regulations and quality standards.

For more information about the certificates, visit <http://www.catc.cz/certificates/>.

The CATC is located in the airport security area. In order to get to the CATC, you must show your Passport at the entrance Gate No. 1 and you will be given a visitor ID badge. If you arrive by car, you will also be given a vehicle entry permit card, which must be displayed on the dashboard at all times while you are parking at the CATC. Free parking is available in front of our building.



LOCATION OF SERVICES

Ground Floor

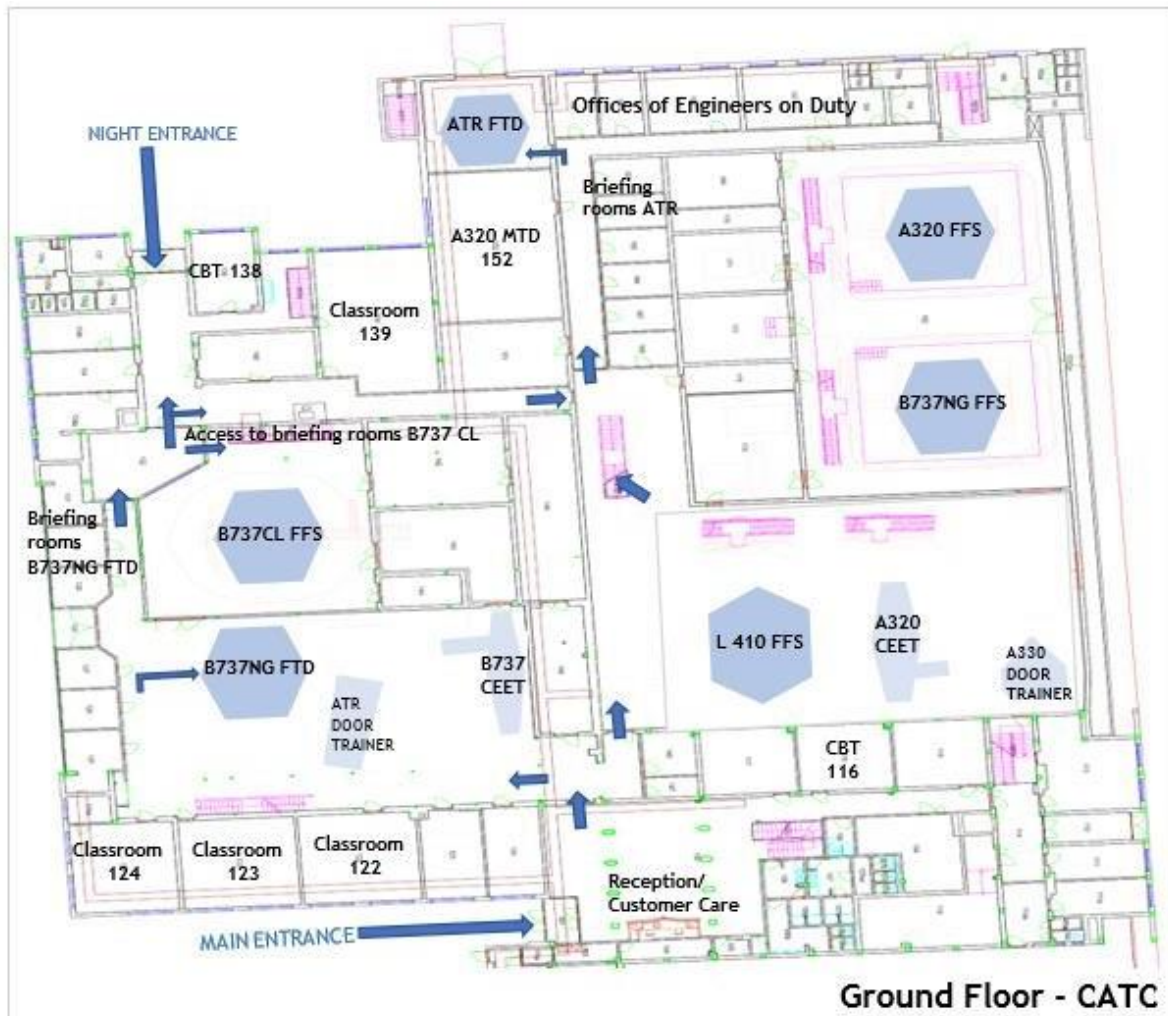
- Reception/Customer Care
- Classrooms (122, 123, 124)
- CBT Classrooms
- L 410 FFS
- B737NG FFS
- A320 FFS
- B737CL FFS
- B737NG FTD
- ATR FTD
- Briefing rooms for B737NG FTD and ATR FTD
- Access to briefing rooms B737CL
- A320 MTD
- B737 CEET
- A320 CEET
- A330 Door Trainer
- ATR Door Trainer
- Raft / slide A330
- Offices of Engineers on Duty

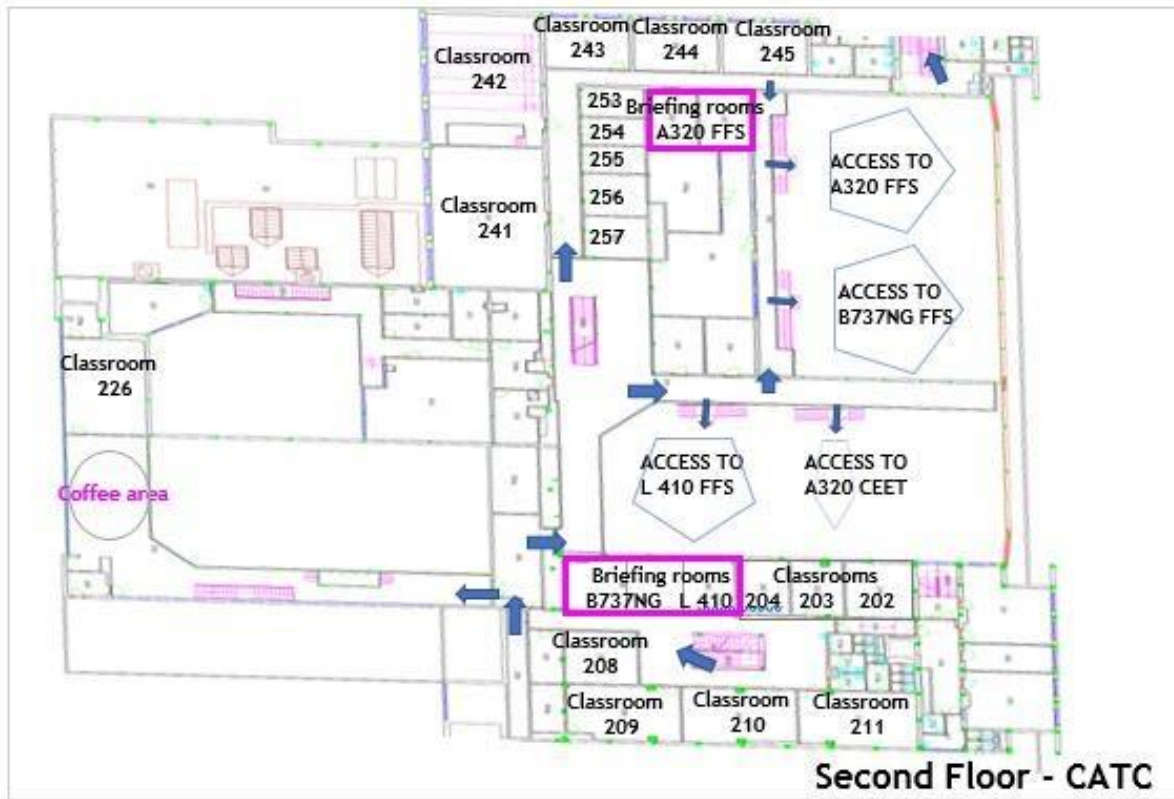
Second Floor

- Classrooms (202, 203, 204, 208, 209, 210, 211, 226, 241, 242, 243, 244, 245)
- Briefing rooms and access to A320 FFS, B737NG FFS, L 410 FFS
- Cockpit Procedure Trainer (B737, A320, L 410)
- A320 MFTD
- PC Flight Simulator

Third Floor

- Classrooms (302, 303, 306, 307, 308, 324, 325, 326)





CLIENT SERVICES

ID Badges

ID badge must be worn at all times. It will be given to you at the entrance Gate No. 1 (“Vrátnice 1”) and must be returned daily at the same place at the end of your training.

Reception

Our Training Facilities are open 24/7, except January 1st and December 24th.

Our main reception operates **Mo to Fr from 6:30 to 18:30, Sat to Sun + public holidays from 8:30 to 16:30**. Outside these hours our technical staff will be available to help you.

Entrance to the building through the main door is opened from 6:30 to 18:30 Mo - Fr, from 8:30 to 16:30 Sat - Sun. Outside the opening hours of the reception you can use the night entrance on the side of the building.

Assistance

If you have questions about your training course schedule or need some help, please do not hesitate to contact the Customer Care Coordinators at the reception desk. The general **telephone number to our building is +420 222 101 222** and is monitored 12 hours a day (the emergency night time contact number is +420 220 111 617).

In case you need to see a doctor or a dentist, please contact Customer Care Coordinators at the reception. They can help you to make an arrangement.

In case of an injury or if immediate medical assistance is needed, first aid can be given in the CATC building or at a medical centre (CATC does not pay for medical expenses).

Useful telephone numbers:

SOS 112, Ambulance - 155, Fire - 150, Police - 158, City police - 156

Training Schedule

Our Training Scheduling Coordinators will do their best to make your schedule as convenient as possible. Any changes to your schedule will be offered through Customer Care Coordinators.

Information

Simulators and classes rosters can be found on the LCD information screen in the reception area.

Photocopies/Faxes

Printing, copying and scanning equipment is available at the reception desk. Please ask our Customer Care Coordinator for assistance if you need to copy or scan your documents.

Internet

WI-FI service is accessible in all parts of our CATC building.

Smoking

All the CATC building is strictly non-smoking. Smoking is only permitted in the designated area outside the building.

Coffee Break Area

Coffee break areas are located on the ground floor and the first floor. Our vending and tea/coffee machines are available 24 hours a day, providing our guests with drinks and refreshment. All vending machines accept coins (1, 2, 5, 10, 20, 50 CZK) or you may use your contactless payment card.

Restaurant

The area of the CATC building offers 3 dining options right in the K Letišti street. All restaurants are situated within a 10-minute walk from the main Gate No. 1.

FBA restaurant is opened from 7:00 - 21:00 Monday to Friday (9:00 - 21:00 Saturday to Sunday). Lunch at this restaurant costs about 80 - 120 CZK and you can only pay in cash. It is also a great place to relax and enjoy a drink after a long day at the training centre.

The Shopping Mall “Šestka” offers a mix of restaurants. A selection of fine dining can also be found in the lobby of Terminal 3.

Parking

Parking is available in front of the CATC building. For our students and visitors it is free of charge.

Field Trip

If part of your training takes place in SRA zone, be aware that:

- ID badges must be worn clearly visible
- Cameras are strictly forbidden.



HOW TO REACH US

Václav Havel Airport Prague and our training centre, located 17 kilometres from the city centre of Prague, is easily accessible by bus, taxi or shuttle.

Public Transport from Václav Havel Airport Prague

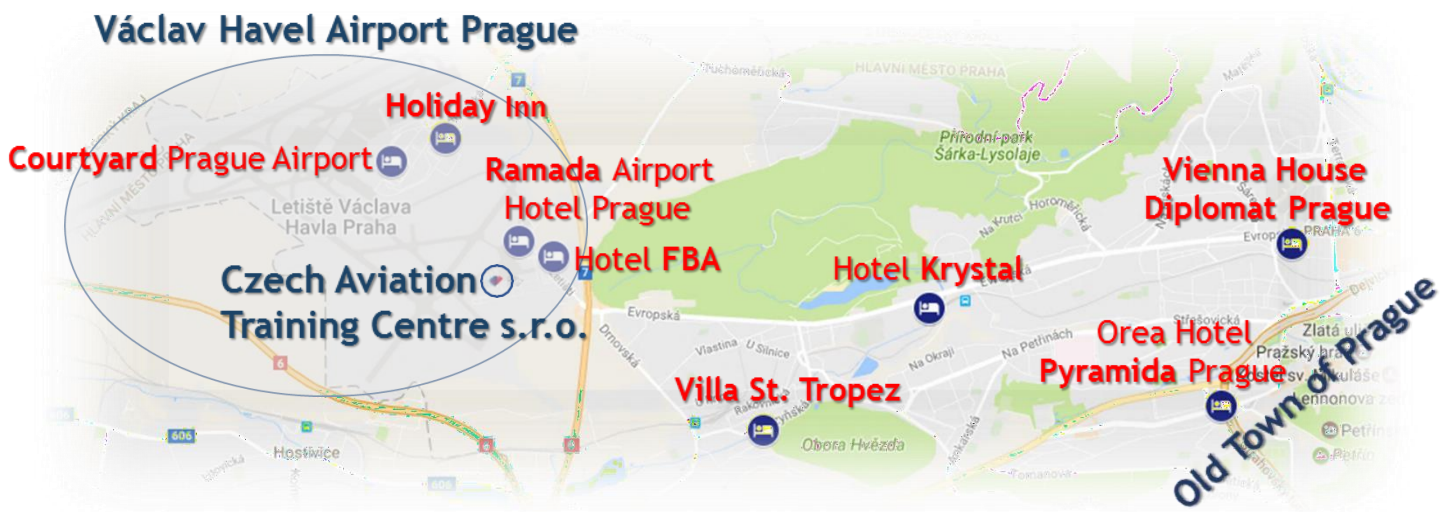
The bus journey between the airport and the Czech Aviation Training Centre takes 8 minutes. You can take the buses No. 100, 119 or 191 to our training centre (the bus stop “K letišti”). Bus tickets are available at the public transport counters in the arrival halls of both terminals (from 7:00 to 22:00). Bus tickets machines are placed at bus stops (cash required) or you can also buy tickets from the bus driver (exact amount of cash required). The city centre is within easy reach from the CATC. It takes about 10 minutes to get to the Nádraží Veleslavín metro station by the bus No. 119. From there you can get to any other place in downtown Prague within 10 minutes.



HOTELS

We can recommend several hotels in the area of our training centre which offer excellent service at a special CATC rate. Our Customer Care Coordinators will be happy to make your reservations, please contact them via mail: info@catc.cz

Map of accommodation arrangements by CATC



TOURIST INFORMATION

Prague Tourism

Prague is the capital and the largest city of the Czech Republic. It is one of the largest cities in Central Europe and has served as the capital of the historical region of Bohemia for centuries. The city is famous for its unique medieval architecture, the historical centre of Prague is inscribed in the World Heritage List. The following websites are good starting points to get more information about our country.

<http://wikitravel.org/en/Prague>

www.czechtourism.com

www.getyourguide.com/Prague/Guided-Tour

<http://www.lonelyplanet.com/czech-republic/prague>

Local Restaurants

<http://tasteofprague.com>

www.tripadvisor.com

<http://www.grand-restaurant.cz/?lng=en>

Local Shop

There is a shopping mall in the area of our training centre.

www.oc-sestka.cz/en/

The big shopping centre “Metropole Zličín” is accessible by bus No. 100 (1 stop).

<http://www.metropole.cz/en/>

Local Sports Facilities

www.sportcentrumevropska.cz/en/home/

Public Transport

Click on the traveller information website below to learn more about the ways of traveling around Prague.

<http://www.dpp.cz/en/>